

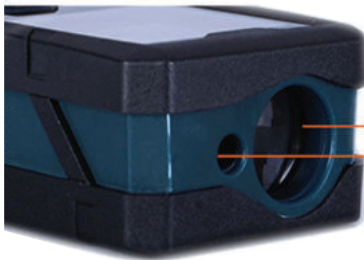
ponpe

INSTRUMENTS

Laser Distance Meter

PONPE LD Series

The laser used in this product should not be used to irradiate the eyes. The power of the laser is within the safety guidelines, but long-term exposure may cause potential harm. The total continuous power of the laser is less than 1.0 mW.



LD1

LD6

LD4

Disassembly, significant physical damage and prolonged water immersion could lead to inaccurate measurements. The instrument should be tested regularly, especially after improper usage or before important measurements. The optical lens should be maintained dry and clear. The lens may be wiped with a microfiber cloth.

This is a Class 2 laser product in accordance with IEC60825-1:2007



Specifications

Model	LD1	LD4	LD6	LD8
Measuring range (M.)	0.1~100	0.1~40	0.1~60	0.1~80
Accuracy	±1.5mm (± 1/16 inch)			
Measure unit	M / in / ft			
Laser class	Class II			
Laser Type	620nm - 690nm, <1MW			
Single measure	✓			
Continuous measure	✓			
Area/Volume measure	✓			
Indirect Pythagoras measure	✓			
Buzzer	✓			
Review	20 groups			
Button Type	P+R			
Button life	More than 1 million			
Battery type	~5000 measurements			
Protection grade	IP54			
Operation temperature	0°C~40°C (32~104°F)			
Storage temperature	-10°C~60°C (14~140°F)			
Laser auto power-off	30s			
Meter auto power-off	180s			
Instrument specification	120*50*30 (mm)			
Instrument weight	110g (4 oz)			

